



PROSPERA

WHERE DREAMS FLOURISH

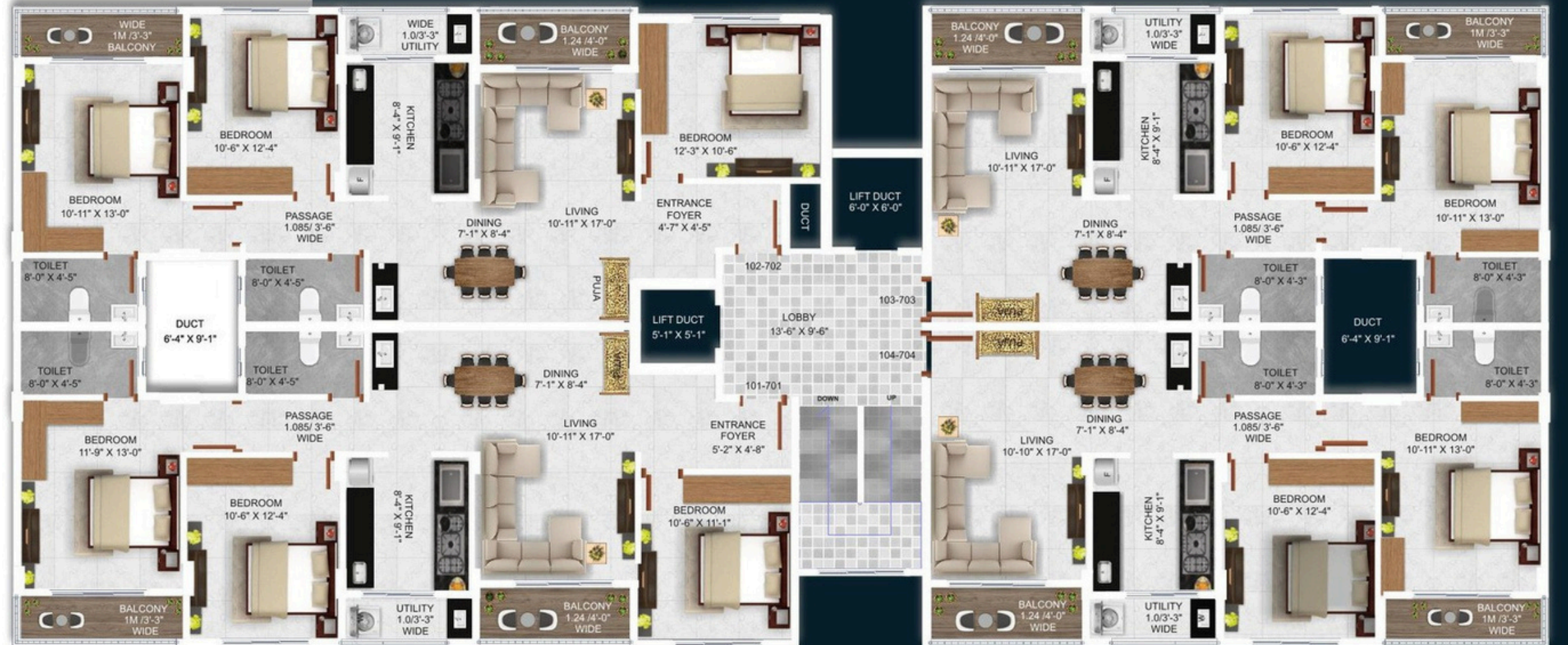
PROPERTIES WITH PROPER-TIES

Prospera is designed for comfortable, modern living. It offers well-planned spaces with essential amenities, providing a convenient and peaceful lifestyle. Located in a prime area, it ensures easy access to daily needs while providing a calm and welcoming environment, making it an ideal place to call home. The project focuses on quality and thoughtful details to create a warm and inviting atmosphere. With its excellent design and location, it promises a fulfilling living experience.

PROSPERA WING A & B LAYOUT



WING A 3BHK - XL (101-701 : 1900 Sq.Ft.)



WING B 3BHK (101-701 & 102-702 : 1500 Sq.Ft.)
2BHK (103-703 & 104-704 : 1250 Sq.Ft.)

AMENITIES



Temple – Find peace & devotion

The on-site temple offers a serene space for prayer and reflection, enriching the spiritual atmosphere of the community.

Kids Play Area – Where playtime meets joy

The kids' play area provides a safe and fun environment for children to explore, learn, and enjoy, adding to the vibrant community atmosphere.

Open Gym – Stay Fit, Stay Active

Our Open Gym is designed to keep you moving anytime you want. There are no restrictions or excuses just fresh air, freedom, and fitness at your convenience. Elevate your workout experience right where you live.

Gazebo – Relax, Unwind, & Connect

Our Gazebo is the perfect spot to enjoy peaceful moments, refreshing conversations, or a quiet nature retreat. Whether it's morning tea, evening chats, or a breezy escape—this space is yours to cherish.

Walking Track

A dedicated walking track for your daily dose of peace, fitness, and fresh air.

SPECIFICATION

Structure

Earthquake-resistant RCC structure

Walls

6-inch external walls and 4.5-inch internal walls

Plaster

Internal : 12mm thick smooth
External : 20mm thick sand faced

Painting

External walls : Weather shield
Internal walls : Two coats of putty with plastic emulsion paint

Toilets

- CP Fittings – Jaguar/Cera
- Antiskid floor tiles with 7' dado
- Provision for geyser & exhaust fan points

Kitchen

- Granite/ full-body vitrified tile platform with stainless steel sink
- Glazed dado tiles upto 2' height above kitchen platform
- Provision for water purifier & chimney points

Electrical

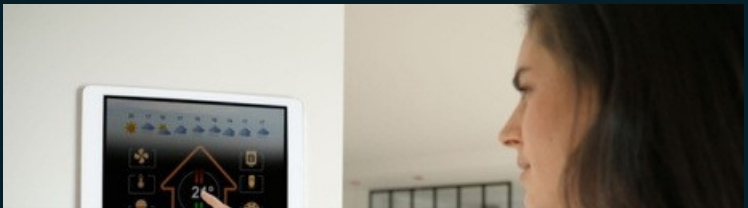
- Concealed ISI mark wiring with sufficient electrical points in all rooms
- Modular switches of Legrand or equivalent brand
- TV & AC electrical points provision in living room & master bedroom
- Provision of inverter & Wi-Fi router point

FACILITIES

- CCTV surveillance for common areas.
- Generator backup for lifts and common utilities.
- Spacious covered and open parking areas.
- Fire Safety: Advanced fire-fighting system for added security.
- EV Charging: Dedicated EV charging point.
- Solar fittings for common areas to promote green living.
- Reliable Elevators – Otis or Kone for smooth and safe transit.



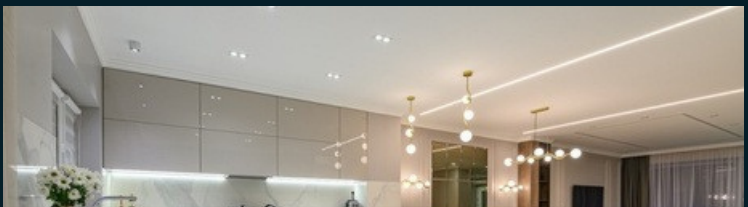
- Biometric main door lock
- Italian finish doors with door frames.



- Touch Panel & Remote Control Automation in Living Room.



- POP in all rooms
- Italian Marble Finish Tiles.



- Modular Kitchen with Tandem Drawers

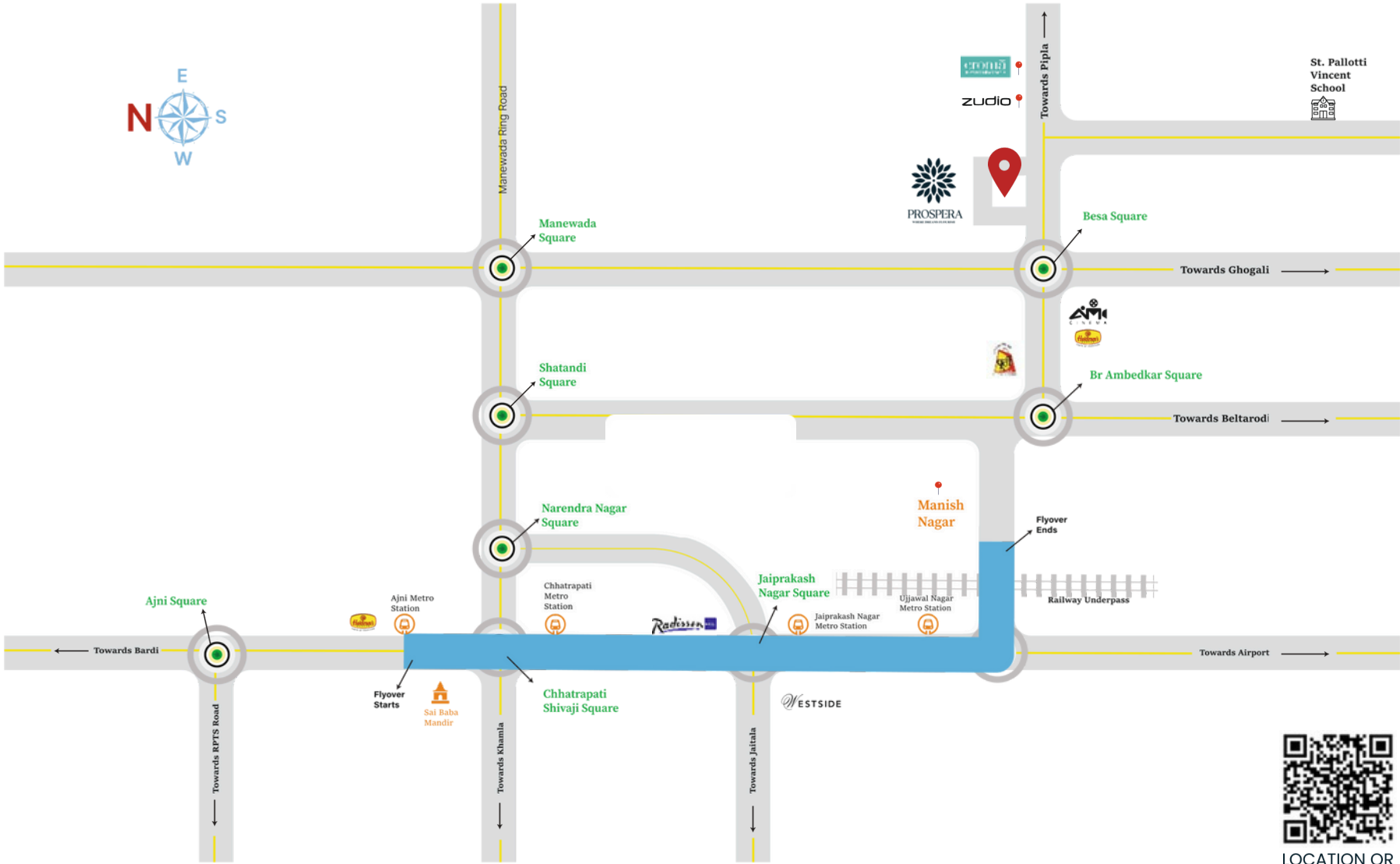
Credits

- Architect & Planning Consultant
- Ar. Parag Kotwal (Ekveera Architects)
- Legal Consultant
- Adv. Sandeep Shastri & Associates
- Structural Consultant
- Er. Nikhil Gangamwar
- Plumbing Consultant
- Er. Abhinav Nikam
- Electrical Consultant
- Er. Devashish Joshi
- 3D Visualization, Branding & Design Consultant
- Illustech

Project By



Illustech | 2025 | +91 7020 771 770



80% Bank Finance Available

SITE ADDRESS: KH. NO. 79/1 (P), PH. NO. 38, MOUZA BESA, NAGPUR - 440037

OFFICE ADDRESS: HOUSE NO. 487/A , GODHULI BEHIND, TULI IMPERIAL, RAMDASPETH, NAGPUR, INDIA-440012.

CONTACT: